

Chronic inflammation in the etiology of disease across the life span

David Furman^{1,2,3,4*}, Judith Campisi^{1,5}, Eric Verdin¹, Pedro Carrera-Bastos⁶, Sasha Targ^{4,7}, Claudio Franceschi^{8,9}, Luigi Ferrucci¹⁰, Derek W. Gilroy¹¹, Alessio Fasano¹², Gary W. Miller¹³, Andrew H. Miller¹⁴, Alberto Mantovani^{15,16,17}, Cornelia M. Weyand¹⁸, Nir Barzilai¹⁹, Jorg J. Goronzy²⁰, Thomas A. Rando^{20,21,22}, Rita B. Effros²³, Alejandro Lucia^{24,25}, Nicole Kleinstreuer^{26,27} and George M. Slavich²⁸

Although intermittent increases in inflammation are critical for survival during physical injury and infection, recent research has revealed that certain social, environmental and lifestyle factors can promote systemic chronic inflammation (SCI) that can, in turn, lead to several diseases that collectively represent the leading causes of disability and mortality worldwide, such as cardiovascular disease, cancer, diabetes mellitus, chronic kidney disease, non-alcoholic fatty liver disease and autoimmune and neurodegenerative disorders. In the present Perspective we describe the multi-level mechanisms underlying SCI and several risk factors that promote this health-damaging phenotype, including infections, physical inactivity, poor diet, environmental and industrial toxicants and psychological stress. Furthermore, we suggest potential strategies for advancing the early diagnosis, prevention and treatment of SCI.

One of the most important medical discoveries of the past two decades has been that the immune system and inflammatory processes are involved in not just a few select disorders, but a wide variety of mental and physical health problems that dominate present-day morbidity and mortality worldwide^{1–4}. Indeed, chronic inflammatory diseases have been recognized as the most significant cause of death in the world today, with more than 50% of all deaths being attributable to inflammation-related diseases such as ischemic heart disease, stroke, cancer, diabetes mellitus, chronic kidney disease, non-alcoholic fatty liver disease (NAFLD) and autoimmune and neurodegenerative conditions⁵. Evidence is emerging that the risk of developing chronic inflammation can be traced back to early development, and its effects are now known to persist throughout the life span to affect adulthood health and risk of

mortality^{6–8}. In this Perspective, we describe these effects and outline some promising avenues for future research and intervention.

Inflammation

Inflammation is an evolutionarily conserved process characterized by the activation of immune and non-immune cells that protect the host from bacteria, viruses, toxins and infections by eliminating pathogens and promoting tissue repair and recovery^{2,9}. Depending on the degree and extent of the inflammatory response, including whether it is systemic or local, metabolic and neuroendocrine changes can occur to conserve metabolic energy and allocate more nutrients to the activated immune system^{9–12}. Specific biobehavioral effects of inflammation thus include a constellation of energy-saving behaviors commonly known as “sickness behaviors,” such as

¹Buck Institute for Research on Aging, Novato, CA, USA. ²Stanford 1000 Immunomes Project, Institute for Immunity, Transplantation and Infection, Stanford University School of Medicine, Stanford, CA, USA. ³Institute for Research in Translational Medicine, Universidad Austral, CONICET, Pilar, Buenos Aires, Argentina. ⁴luve Inc., San Mateo, CA, USA. ⁵Lawrence Berkeley National Laboratory, Berkeley, CA, USA. ⁶Center for Primary Health Care Research, Lund University/Region Skåne, Skåne University Hospital, Malmö, Sweden. ⁷Medical Scientist Training Program, University of California, San Francisco, San Francisco, CA, USA. ⁸IRCCS Institute of Neurological Sciences of Bologna, Bologna, Italy. ⁹Department of Applied Mathematics and Laboratory of Systems Biology of Aging, Lobachevsky University, Nizhny Novgorod, Russia. ¹⁰Translational Gerontology Branch, National Institute on Aging, National Institutes of Health, Baltimore, MD, USA. ¹¹Centre for Clinical Pharmacology and Therapeutics, Division of Medicine, University College London, London, UK. ¹²MassGeneral Hospital for Children, Harvard Medical School, Boston, MA, USA. ¹³Department of Environmental Health Sciences, School of Public Health, Columbia University Medical Center, New York, NY, USA. ¹⁴Department of Psychiatry and Behavioral Sciences, Emory University School of Medicine, Atlanta, GA, USA. ¹⁵Humanitas Clinical and Research Center, Rozzano, Milan, Italy. ¹⁶Department of Biomedical Sciences, Humanitas University, Pieve Emanuele, Milan, Italy. ¹⁷William Harvey Research Institute, Barts and the London School of Medicine, Queen Mary University, London, UK. ¹⁸Division of Immunology and Rheumatology, Department of Medicine, Stanford University, Stanford, CA, USA. ¹⁹Departments of Medicine and Genetics, Albert Einstein College of Medicine, New York, NY, USA. ²⁰Paul F. Glenn Center for the Biology of Aging, Stanford University School of Medicine, Stanford, CA, USA. ²¹Center for Tissue Regeneration, Repair and Restoration, Veterans Affairs Palo Alto Health Care System, Palo Alto, CA, USA. ²²Department of Neurology and Neurological Sciences, Stanford University School of Medicine, Stanford, CA, USA. ²³Department of Pathology, University of California, Los Angeles, Los Angeles, CA, USA. ²⁴Faculty of Sport Sciences, Universidad Europea de Madrid, Madrid, Spain. ²⁵Research Institute of the Hospital 12 de Octubre (i+12), Madrid, Spain. ²⁶Biostatistics and Computational Biology Branch, Division of Intramural Research, National Institute of Environmental Health Sciences, National Institutes of Health, Department of Health and Human Services, Research Triangle Park, NC, USA. ²⁷NTP Interagency Center for the Evaluation of Alternative Toxicological Methods, National Institute of Environmental Health Sciences, National Institutes of Health, Department of Health and Human Services, Research Triangle Park, NC, USA. ²⁸Cousins Center for Psychoneuroimmunology and Department of Psychiatry and Biobehavioral Sciences, University of California, Los Angeles, Los Angeles, CA, USA. *e-mail: furmand@stanford.edu

sadness, anhedonia, fatigue, reduced libido and food intake, altered sleep and social-behavioral withdrawal, as well as increased blood pressure, insulin resistance and dyslipidemia^{10,13}. These behavioral changes can be critical for survival during times of physical injury and microbial threat¹⁴.

A normal inflammatory response is characterized by the temporally restricted upregulation of inflammatory activity that occurs when a threat is present and that resolves once the threat has passed^{9,13,15}. However, the presence of certain social, psychological, environmental and biological factors has been linked to the prevention of resolution of acute inflammation and, in turn, the promotion of a state of low-grade, non-infective (that is, 'sterile') systemic chronic inflammation (SCI) that is characterized by the activation of immune components that are often distinct from those engaged during an acute immune response^{13,16}.

Shifts in the inflammatory response from short- to long-lived can cause a breakdown of immune tolerance^{9,15} and lead to major alterations in all tissues and organs, as well as normal cellular physiology, which can increase the risk for various non-communicable diseases in both young and older individuals^{1,9–11,15,17–21}. SCI can also impair normal immune function, leading to increased susceptibility to infections and tumors and a poor response to vaccines^{22–25}. Furthermore, SCI during pregnancy and childhood can have serious developmental consequences that include elevating the risk of non-communicable diseases over the life span^{7,8,26,27}.

Systemic chronic inflammation and non-communicable disease risk

Although they share some common mechanisms, the acute inflammatory response differs from SCI (Table 1). Most notably, the acute inflammatory response is typically initiated during times of infection via an interaction between pattern recognition receptors expressed on innate immune cells and evolutionarily conserved structures on pathogens, called pathogen-associated molecular patterns (PAMPs). The acute inflammatory response can also be activated by damage-associated molecular patterns (DAMPs) that are released in response to physical, chemical or metabolic noxious stimuli—that is, 'sterile' agents—during cellular stress or damage². Following infection, production of molecules such as lipoxins, resolvins, maresins and protectins then contribute to the resolution of inflammation^{28,29}.

In contrast, SCI is typically triggered by DAMPs in the absence of an acute infectious insult or activation of PAMPs^{30–32}. SCI often increases with age³⁰, as indicated by studies showing that older individuals have higher circulating levels of cytokines, chemokines and acute phase proteins, as well as greater expression of genes involved in inflammation^{1,19,30}. Moreover, SCI is low-grade and persistent (as the name suggests) and ultimately causes collateral damage to tissues and organs over time, such as by inducing oxidative stress^{1,4,9,19}.

The clinical consequences of SCI-driven damage can be severe and include increased risk of the metabolic syndrome, which includes the triad of hypertension, hyperglycemia and dyslipidemia^{33,34}; type 2 diabetes³³; NAFLD^{33,35}; hypertension¹; cardiovascular disease (CVD)^{18,19}; chronic kidney disease¹⁹; various types of cancer¹⁷; depression²¹; neurodegenerative and autoimmune diseases^{4,12,20}; osteoporosis^{11,36} and sarcopenia¹⁹ (Fig. 1). Empirical evidence that inflammation plays a role in disease onset or progression is strongest for metabolic syndrome, type 2 diabetes and CVD. Indeed, it has long been known that patients with autoimmune diseases such as rheumatoid arthritis that are characterized by systemic inflammation have insulin resistance, dyslipidemia and hypertension, and that they have higher rates of metabolic syndrome, type 2 diabetes and CVD (particularly ischemic heart disease and stroke)^{10,12,37–39}. Moreover, the inflammatory biomarker high-sensitivity C-reactive protein (CRP) is a predictor of cardiovascular events in men and women⁴⁰. In a recent meta-analysis of data from more

Table 1 | Acute inflammation versus systemic chronic inflammation

	Acute inflammation	Systemic chronic inflammation
Trigger	PAMPs (infection), DAMPs (cellular stress, trauma)	DAMPs ('exposome', metabolic dysfunction, tissue damage)
Duration	Short-term	Persistent, non-resolving
Magnitude	High-grade	Low-grade
Outcome(s)	Healing, trigger removal, tissue repair	Collateral damage
Age-related	No	Yes
Biomarkers	IL-6, TNF- α , IL-1 β , CRP	Silent—no canonical standard biomarkers

DAMP, damage-associated molecular pattern; PAMP, pathogen-associated molecular pattern.

than 160,000 people across 54 long-term prospective studies, higher levels of circulating CRP were associated with a relative increase in risk for both coronary heart disease and CVD mortality⁴¹.

The most compelling evidence for an association between SCI and disease risk comes from randomized controlled trials (RCTs) that have tested drugs or biologics that target specific pro-inflammatory cytokines, such as interleukin (IL)-1 β and tumor necrosis factor (TNF)- α . In a recent meta-analysis of eight RCTs that included a total of 260 participants, anti-TNF- α inhibitor therapy was found to significantly reduce insulin resistance in patients with rheumatoid arthritis and to improve their insulin sensitivity⁴². The risk for developing Alzheimer's disease was also significantly lower among patients with rheumatoid arthritis treated with the TNF- α inhibitor etanercept⁴³. In addition, a recent double-blind RCT of the IL-1 β inhibitor canakinumab that assessed more than 10,000 adults with a history of myocardial infarction and elevated circulating CRP levels showed that patients treated with canakinumab subcutaneously every 3 months had lower rates of nonfatal myocardial infarction, nonfatal stroke and CVD death compared with those treated with a placebo, despite having no change in LDL cholesterol, which is a risk factor for CVD. In this trial, canakinumab-treated patients also exhibited a lower likelihood of unstable angina leading to urgent revascularization⁴⁴.

Along similar lines, a recent study of more than 160,000 people from North Glasgow found that a combination of the inflammatory markers CRP (>10 mg/L; HR 2.71, $P < 0.001$), albumin (>35 mg/L; HR 3.68, $P < 0.001$) and neutrophil count (HR 2.18, $P < 0.001$) predicted all-cause mortality over 8 years, in addition to mortality due to cancer, cardiovascular and cerebrovascular disease⁴⁵.

Biomarkers for systemic chronic inflammation

Despite evidence linking SCI with disease risk and mortality⁴⁵, there are presently no standard biomarkers for indicating the presence of health-damaging chronic inflammation. Studies have shown that canonical biomarkers of acute inflammation predict morbidity and mortality in both cross-sectional and longitudinal studies and may thus be used to index age-related SCI⁴⁶. This approach has notable limitations, though. For example, early work by Roubenoff and colleagues showed that in monocytes from ambulatory individuals, levels of IL-6 and IL-1Ra (but not IL-1 β or TNF- α) increased with age⁴⁷. However, no difference in IL-1 and IL-6 expression has been found between young and older individuals when the health status of older individuals is strictly controlled^{48,49}.

Additionally, a recent study examined levels of 18 endogenous and ex vivo-stimulated inflammatory markers in 41 healthy volunteers of different ages across the life span. Results revealed that unstimulated levels of IL-12p70 in women and CRP in men were

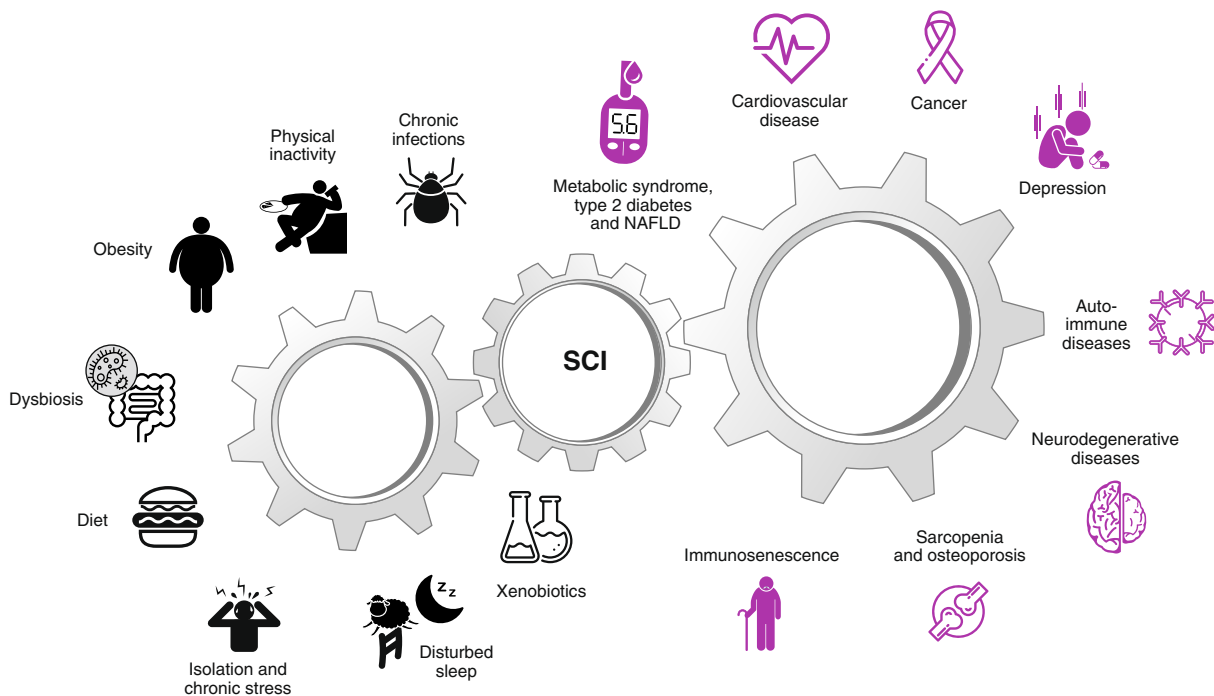


Fig. 1 | Causes and consequences of low-grade systemic chronic inflammation. Several causes of low-grade systemic chronic inflammation (SCI) and their consequences have been identified. As shown on the left, the most common triggers of SCI (in counter-clockwise direction) include chronic infections, physical inactivity, (visceral) obesity, intestinal dysbiosis, diet, social isolation, psychological stress, disturbed sleep and disrupted circadian rhythm, and exposure to xenobiotics such as air pollutants, hazardous waste products, industrial chemicals and tobacco smoking. As shown on the right, the consequences of SCI (in clockwise direction) include metabolic syndrome, type 2 diabetes, non-alcoholic fatty liver disease (NAFLD), cardiovascular disease, cancer, depression, autoimmune diseases, neurodegenerative diseases, sarcopenia, osteoporosis and immunosenescence.

associated with older age, whereas no effects were found for IL-1 β , IFN- α or TNF- α ⁵⁰. Therefore, evidence exists that greater inflammatory activity is associated with older age, but this is not true of all inflammatory markers, and it is possible that these associations are due at least in part to increases in chronic ailments and frailty that are frequently associated with age rather than to biological aging itself.

To address limitations associated with assessing only a few select inflammatory biomarkers, some researchers have employed a multi-dimensional approach that involves assaying large numbers of inflammatory markers and then combining these markers into more robust indices representing heightened inflammatory activity. In one such study, researchers used principal component analysis to identify pro- and anti-inflammatory markers and an innate immune response that significantly predicted risk for multiple chronic diseases (CVD, kidney disease and diabetes), in addition to mortality⁵¹.

More recently, a multi-omics approach has been applied to examine links between SCI and disease risk. The researchers followed 135 adults longitudinally and conducted deep molecular profiling of participants' whole-blood gene expression, termed the transcriptome; immune proteins—for example, cytokines and chemokines—termed the immunome; and cell subset frequencies, such as CD8⁺ T cell subsets, monocytes, natural killer (NK) cells, B cells and CD4⁺ T cell subsets. This enabled the researchers to construct a high-dimensional trajectory of immune aging (IMM-AGE) that described individuals' immune functioning better than their chronological age. This new metric in turn accurately predicted all-cause mortality, establishing its potential future use for identifying at-risk patients in clinical settings⁵². These types of integrative, multi-level approaches to characterizing SCI are promising, but this work is still in its infancy and much more research is needed to identify best practices for selecting and analyzing SCI-related biomarkers in

order to yield the most useful and predictive information for quantifying age-related disease risk.

Sources of systemic chronic inflammation

The SCI state in older individuals is thought to be caused in part by a complex process called cellular senescence, which is characterized by an arrest of cell proliferation and the development of a multifaceted senescence-associated secretory phenotype (SASP)⁵³. A prominent feature of this phenotype is increased secretion of pro-inflammatory cytokines, chemokines and other pro-inflammatory molecules from cells⁵³. Senescent cells expressing this phenotype can in turn promote a multitude of chronic health conditions and diseases, including insulin resistance, CVD, pulmonary arterial hypertension, chronic obstructive pulmonary disorder, emphysema, Alzheimer's and Parkinson's diseases, macular degeneration, osteoarthritis and cancer^{54,55}.

How senescent cells acquire the SASP is not fully understood, but existing research points to a combination of both endogenous and non-endogenous social, environmental and lifestyle risk factors. Among the known endogenous causes of this phenotype are DNA damage, dysfunctional telomeres, epigenomic disruption, mitogenic signals and oxidative stress⁵⁶. The non-endogenous contributors are thought to include chronic infections⁵⁷, lifestyle-induced obesity⁵⁸, microbiome dysbiosis⁵⁹, diet⁶⁰, social and cultural changes^{61,62} and environmental and industrial toxicants⁶³. The fact that differences exist in the extent to which older adults exhibit SCI^{52,64} is thought to be indicative of inter-individual differences in exposure to these and other related pro-inflammatory factors, although studies documenting within-person associations between these risk factors and SCI are limited.

Nevertheless, differences in non-communicable diseases associated with SCI are evident across cultures and countries. Most

prominently, SCI-related disease rates have increased dramatically for both older and younger individuals living in industrialized countries who follow a Western lifestyle but are relatively rare among individuals in non-Westernized populations who adhere to diets, lifestyles and ecological niches that more closely resemble those present during most of human evolution^{65–71}. Furthermore, dietary and lifestyle habits, as well as exposure to a variety of different pollutants, can increase oxidative stress, upregulate mitogenic signaling pathways and cause genomic and epigenomic perturbations^{8,60,62,63} that can induce the SASP. Further evidence for a role of lifestyle in the development of chronic inflammation comes from a study of 210 healthy twins between 8 and 82 years old, which found that non-heritable factors are the strongest contributors to differences in chronic inflammation across individuals⁷² and that exposure to environmental factors, which have been collectively called the exposome, are the main drivers of SCI. Simply put, the exposome refers to a person's lifelong exposure to physical, chemical and biological elements, starting from the prenatal period onward⁷³.

Chronic infections. The effect of lifelong infections caused by cytomegalovirus, Epstein–Barr virus, hepatitis C virus and other infectious agents on SCI and immune dysregulation remains controversial^{74–78}. In terms of aging, chronic infection with cytomegalovirus has been associated with the so-called immune risk phenotype that has been predictive of early mortality in several longitudinal studies⁷⁹. Furthermore, chronic infection with HIV causes premature aging of the immune system and is associated with early cardiovascular and skeletal changes⁵⁷, with such effects being attributed in large part to the accumulation of senescent CD8⁺ T cells that produce increased levels of pro-inflammatory mediators⁸⁰.

Although several studies have reported associations between chronic infections and autoimmune diseases, certain cancers, neurodegenerative diseases and CVD, chronic infections appear to interact synergistically with environmental and genetic factors to influence these health outcomes^{76,77,81}. Indeed, humans coevolved with a variety of viruses, bacteria and other microbes⁸², and while chronic infections appear to contribute to SCI, they are not likely the primary driver. For instance, populations of hunter-gatherers and other existing non-industrialized societies such as the Shuar hunter-gatherers of the Ecuadorian Amazon^{83,84}, Tsimané forager-horticulturalists of Bolivia⁶⁸, Hadza hunter-gatherers from Tanzania⁶⁷, subsistence agriculturalists from rural Ghana⁸⁵ and traditional horticulturalists of Kitava (Papua New Guinea)⁸⁶—all of whom are minimally exposed to industrialized environments but highly exposed to a variety of microbes—exhibit very low rates of inflammation-related chronic disease and substantial fluctuations in inflammatory markers that do not increase with age^{65,67,68,83,86}.

Lifestyle, social and physical environment. Individuals in the populations mentioned above have relatively short life expectancies on average, which means that some die before showing signs of advanced aging. However, the relative absence of SCI-related health problems in these populations has not been attributed to genetics or to having a shorter life expectancy, but rather to lifestyle factors and the social and physical environments the people inhabit⁶⁶. Their lifestyles, for example, are characterized by higher levels of physical activity^{67,71,87}, diets composed mainly of fresh or minimally processed food sources^{66,88,89}, and less exposure to environmental pollutants⁶⁶. In addition, individuals living in these environments generally have circadian rhythms that are more closely synchronized with diurnal fluctuations in sunlight exposure⁹⁰ and the social stressors they experience are different from those typically present in industrialized environments⁹¹.

These social and environmental characteristics are believed to have predominated during most of hominin evolutionary history until industrialization^{66,82,89}. Industrialization conferred many benefits,

including social stability; reduced physical trauma; access to modern medical technology; and improved public health measures, such as sanitation, quarantine policies and vaccination, all of which significantly decrease infant mortality rates and increase average life expectancy⁶⁶. However, more recently, these changes also caused radical shifts in diet and lifestyle, resulting in living circumstances that are very different from the ones that shaped human physiology for most of evolution. This is believed to have created an evolutionary mismatch in humans—characterized by an increasing separation from their ecological niche—and this mismatch, in turn, has been hypothesized to be a major cause of SCI^{65,66,82,89,92}.

Physical activity. Industrialization is thought to have caused a significant overall decrease in physical activity. One study showed that, worldwide, 31% of individuals are considered physically inactive—defined as not meeting the minimum international recommendations for regular physical activity—with levels of inactivity being higher in high-income countries than in low-to-middle-income countries⁹³. In the United States, these numbers are even higher, with approximately 50% of American adults being considered physically inactive⁹⁴.

Skeletal muscle is an endocrine organ that produces and releases cytokines and other small proteins, called myokines, into the bloodstream. This occurs particularly during muscle contraction and can have the effect of systemically reducing inflammation⁹⁵. Low physical activity, therefore, has been found to be directly related to increased anabolic resistance⁹⁶ and levels of CRP and pro-inflammatory cytokine levels in healthy individuals⁹⁷, as well as in breast cancer survivors⁹⁸ and patients with type 2 diabetes⁹⁹. These effects can, in turn, promote several inflammation-related pathophysiological alterations, including insulin resistance, dyslipidemia, endothelial dysfunction, high blood pressure and loss of muscle mass (sarcopenia)¹⁰⁰, that have been found to increase risk for a variety of conditions, including CVD, type 2 diabetes, NAFLD, osteoporosis, various types of cancer, depression, dementia and Alzheimer's disease, in individuals who are chronically inactive^{95,100}.

Consistent with these effects, there is strong evidence for an association between physical inactivity and increased risk for age-related diseases and mortality. A recent meta-analysis of studies with cohorts from Europe, the United States and the rest of the world that included 1,683,693 participants found that going from physically inactive to achieving the recommended 150 minutes of moderate-intensity aerobic activity per week was associated with lower risk of CVD mortality by 23%, CVD incidence by 17%, and type 2 diabetes incidence by 26% during an average follow-up period of 12.8 years¹⁰¹. Moreover, data from 1.44 million participants across several prospective cohort studies revealed that, as compared to individuals exhibiting high levels of leisure-time physical activity (≥ 90 th percentile), those who were physically inactive (≤ 10 th percentile) had a greater risk ($>20\%$) of developing several cancers, including esophageal adenocarcinoma; liver, lung, kidney, gastric cardia and endometrial cancers; and myeloid leukemia, even after adjusting for multiple major risk factors such as adiposity and smoking status (except for lung cancer)¹⁰². Likewise, a meta-analysis of ten studies and 23,345 older adults (70 to 80 years old) who were followed for 3.9–31 years found that individuals meeting the minimum international physical activity recommendations had a 40% lower risk of Alzheimer's disease as compared to their physically inactive counterparts¹⁰³.

Finally, physical inactivity can increase individuals' risk for various non-communicable diseases because it is linked to obesity¹⁰⁰ and, in particular, excessive visceral adipose tissue (VAT), which is a significant trigger of inflammation^{104–106}. VAT is an active endocrine, immunological and metabolic organ composed of various cells (including immune cells, such as resident macrophages) that expands mostly through adipocyte hypertrophy, which can lead

to areas of hypoxia and even cell death, resulting in activation of hypoxia-inducible factor-1 α , increased production of reactive oxygen species, and release of DAMPs (for example, cell-free DNA). These events can induce the secretion of numerous pro-inflammatory molecules, including adipokines, cytokines (for example, IL-1 β , IL-6, TNF- α), and chemokines (especially monocyte chemoattractant protein-1) by adipocytes, endothelial cells and resident adipose tissue immune cells (for example, macrophages)^{105–108}. This in turn leads to the infiltration of various immune cells in the VAT, including monocytes, neutrophils, dendritic cells, B cells, T cells and NK lymphocytes, and a reduction in T regulatory cells, thereby amplifying inflammation, which can eventually become prolonged and systemic in some individuals^{106–109}.

Furthermore, TNF- α and other molecules can cause adipocyte insulin resistance, which increases lipolysis, with the resulting spillover of lipids into other organs, such as the pancreas and liver, where they can contribute to beta-cell dysfunction, hepatic insulin resistance and fatty liver¹⁰⁶. Hence, visceral obesity accelerates aging and increases risk for cardiometabolic, neurodegenerative and autoimmune diseases, as well as several types of cancer^{19,104,106,110–112}. These dynamics are known to occur in adults and can promote age-related disease risk, but they first emerge during childhood²⁶. The childhood obesity epidemic might thus be playing a key role in promoting inflammation and age-related disease risk worldwide¹¹³.

Microbiome dysbiosis. Obesity may also lead to SCI through gut microbiome-mediated mechanisms¹¹⁴. For example, studies conducted in moderately obese Danish individuals without diabetes¹¹⁵ and in severely obese French women¹¹⁶ found changes in gut microbiota composition and microbial gene richness that were correlated with increased fat mass, pro-inflammatory biomarkers and insulin resistance. Furthermore, in older adults, changes in the gut microbiota seem to influence the outcome of multiple inflammatory pathways⁵⁹.

Obesity, which is strongly linked to changes in the gut microbiome, has also been associated with increased intestinal paracellular permeability and endotoxemia^{114,117}. Moreover, the latter is a suspected cause of inflammation through activation of pattern recognition receptors, such as Toll-like receptors, in immune cells and of inflammation-mediated metabolic conditions such as insulin resistance¹¹⁸. Interestingly, serum concentrations of zonulin, a protein that increases intestinal permeability, appear to be elevated in obese children and adults^{117,119}, and in persons with type 2 diabetes¹¹⁸, NAFLD, coronary heart disease, polycystic ovary syndrome, autoimmune diseases and cancer¹¹⁷. More recently, elevated serum zonulin concentrations have been found to predict inflammation and physical frailty¹²⁰.

More broadly, it has been hypothesized that a complex balance exists in the intestinal ecosystem that, if disrupted, can compromise its function and integrity and in turn cause low-grade SCI⁵⁹. It may thus be important to identify possible triggers of dysbiosis and intestinal hyperpermeability, which could potentially include the overuse of antibiotics, nonsteroidal anti-inflammatory drugs and proton-pump inhibitors^{121,122}; lack of microbial exposure induced by excessive hygiene and reduced contact with animals and natural soils, which is a very recent phenomenon in human evolutionary history^{82,123}; and diet¹²³ (see below).

Diet. The typical diet that has become widely adopted in many countries over the past 40 years is relatively low in fruits, vegetables and other fiber- and prebiotic-rich foods^{66,123–125} and high in refined grains¹²⁴, alcohol¹²⁶ and ultra-processed foods¹²⁵, particularly those containing emulsifiers¹²⁷. These dietary factors can alter the gut microbiota composition and function^{123,127–130} and are linked to increased intestinal permeability^{129–131} and epigenetic changes in the immune system¹²⁹ that ultimately cause low-grade endotoxemia and SCI^{129–131}. The influence of diet on inflammation is not confined to

these effects, though. For example, orally absorbed advanced glycation and lipoxidation end-products that are formed during the processing of foods or when foods are cooked at high temperatures and in low-humidity conditions are appetite increasing and are linked to overnutrition and hence obesity and inflammation¹³². Furthermore, high-glycemic-load foods, such as isolated sugars and refined grains, which are common ingredients in most ultra-processed foods, can cause increased oxidative stress that activates inflammatory genes¹³³.

Other dietary components that are thought to influence inflammation include trans fatty acids¹³⁴ and dietary salt. For example, salt has been shown to skew macrophages toward a pro-inflammatory phenotype characterized by the increased differentiation of naive CD4⁺ T cells into T helper (T_H)-17 cells, which are highly inflammatory, and decreased expression and anti-inflammatory activity of T regulatory cells¹³⁵. In addition, high salt intake can cause adverse changes in gut microbiota composition, as exemplified by the reduced *Lactobacillus* population observed in animals and humans fed high-salt diets¹³⁵. This specific population is critical for health as it regulates T_H17 cells and enhances the integrity of the intestinal epithelial barrier, thus reducing systemic inflammation¹³⁵. Consistent with the expected health-damaging effects of consuming foods that are high in trans fats and salt, a recent cohort study of 44,551 French adults who were followed for a median of 7.1 years found that a 10% increase in the proportion of ultra-processed food consumption was associated with a 14% greater risk of all-cause mortality¹³⁶.

Several other nutritional factors can also promote inflammation and potentially contribute to the development of SCI. These factors include deficiencies in micronutrients, including zinc¹³⁷ and magnesium¹³⁸, which are caused by eating processed or refined foods that are low in vitamins and minerals, and having suboptimal omega-3 levels¹³⁹, which impacts the resolution phase of inflammation. Long-chain omega-3 fatty acids—especially eicosapentaenoic acid and docosahexaenoic acid—modulate the expression of genes involved in metabolism and inflammation¹³⁹. More importantly, they are precursors to molecules such as resolvins, maresins and protectins that are involved in the resolution of inflammation^{28,29}. The main contributors to the growing worldwide incidence of low omega-3 status are a low intake of fish and high intake of vegetable oils that are high in linoleic acid, which displaces omega-3 fatty acids in cell membrane phospholipids^{140,141}. In turn, various RCTs have shown that omega-3 fatty acid supplementation reduces inflammation^{142–144} and may thus have health-promoting effects^{141–144}.

Evidence linking diet and mortality is robust. For example, an analysis of nationally representative health surveys and disease-specific mortality statistics from the National Center for Health Statistics in the United States showed that the dietary risk factors associated with the greatest mortality among American adults in 2005 were high dietary trans fatty acids, low dietary omega-3 fatty acids, and high dietary salt¹⁴⁵. In addition, a recent systematic analysis of dietary data from 195 different countries identified poor diet as the main risk factor for death in 2017, with excessive sodium intake being responsible for more than half of diet-related deaths¹⁴⁶.

Finally, when combined with low physical activity, consuming hyperpalatable processed foods that are high in fat, sugar, salt and flavor additives¹⁴⁷ can cause major changes in cell metabolism and lead to the increased production (and defective disposal) of dysfunctional organelles such as mitochondria, as well as to misplaced, misfolded and oxidized endogenous molecules^{30,60,148}. These altered molecules, which increase with age^{19,30}, can be recognized as DAMPs by innate immune cells, which in turn activate the inflammasome machinery, amplify the inflammatory response^{1,30,60} and contribute to a biological state that has been called “inflammaging,” defined as the “the long-term result of the chronic physiological stimulation of the innate immune system” that occurs in later life³⁰. As proposed, inflammaging involves changes in numerous organ systems, such

as the brain, gut, liver, kidney, adipose tissue and muscle¹⁹, and it is driven by a variety of molecular-age-related mechanisms that have been called the “Seven Pillars of Aging”²⁵—namely, adaptation to stress, epigenetics, inflammation, macromolecular damage, metabolism, proteostasis and stem cells and regeneration.

Social and cultural changes. In addition to physical inactivity and diet, the industrial revolution and modern era have ushered in changes in social interactions and sleep quality^{59,91} that can promote SCI^{149,150} and insulin resistance¹⁵¹, in turn increasing risk for obesity, type 2 diabetes, CVD and all-cause mortality^{150–154}. Moreover, psychological stressors that are persistently present in some contemporary work environments, such as those characterized by high job demand and low control, can cause physiologic changes¹⁵⁵ that disrupt the ability for glucocorticoids to effectively down-regulate inflammatory activity due to decreased sensitivity caused by chronic elevation in cortisol, leading in turn to SCI and poor health¹⁵⁶.

Another core feature of modern society that has occurred very recently in human evolutionary history is increased exposure to artificial light, especially the blue spectrum, at atypical biologic times^{157–159}. Exposure to blue light, especially after sundown, increases arousal and alertness at night and thus causes circadian rhythm disruption^{158,159}, which in turn promotes inflammation¹⁶⁰, and is a risk for multiple inflammation-related diseases^{157,159}. As an example, night-shift work has been found to increase risk for the metabolic syndrome and is suspected of being a causal factor in obesity, type 2 diabetes and CVD, as well as in breast, ovarian, prostate, colorectal and pancreatic cancer¹⁵⁷.

Environmental and industrial toxicants. The rapid rise in urbanization over the past 200 years⁸ brought with it an unprecedented increase in humans’ exposure to various xenobiotics, including air pollutants, hazardous waste products and industrial chemicals that promote SCI^{8,161}. Each year, an estimated 2,000 new chemicals are introduced into items that individuals use or ingest daily, including foods, personal care products, prescription drugs, household cleaners and lawn care products (see <https://ntp.niehs.nih.gov>). The concomitant increase in the estimated contribution of environmental chemicals to human disease burden¹⁶² has prompted a shift toward data generation using high-throughput screening to investigate the effect of industrial toxicants on cellular pathways, which has been supported by initiatives like the US Federal Tox21 Program, and toward the adoption of translational systems-toxicology approaches for integrating diverse data streams to better understand how chemicals affect human health and disease outcomes¹⁶³. The Tox21 Program has tested more than 9,000 chemicals using more than 1,600 assays and has demonstrated that numerous chemicals to which people are commonly exposed greatly alter molecular signaling pathways that underlie inflammation and inflammation-related disease risk¹⁶⁴. These chemicals include phthalates, per- and polyfluoroalkyl substances, bisphenols, polycyclic aromatic hydrocarbons and flame retardants¹⁶⁵.

These compounds and others promote inflammatory activity via multiple mechanisms. For example, they can be cytotoxic^{8,162}, cause oxidative stress or act as endocrine disruptors, starting in utero⁸. These chemicals are thus suspected of playing a causal role in hormone-dependent cancers, metabolic syndrome, type 2 diabetes, hypertension, CVD, allergy and asthma, and autoimmune and neurodegenerative diseases^{8,162,166}. Tobacco smoking, which remains a worldwide health problem, is yet another source of xenobiotics that has been associated with a variety of inflammation-related diseases¹⁶⁷.

Developmental origins of systemic chronic inflammation

The origins of SCI can also be viewed from a developmental perspective. For example, it is well established that childhood circumstances significantly impact metabolic and immune responses

later in life, which in turn promote SCI in adulthood^{8,26,27,168,169}. Childhood obesity, for instance, is strongly associated with major changes in adipose tissue and metabolic dysfunction that cause metabolism-related-SCI, or so-called meta-inflammation²⁶. Because obese children often become obese adolescents and adults²⁶, the risk of developing a pro-inflammatory phenotype also frequently persists into adulthood among individuals who were obese as children.

Another example of SCI being influenced by early life circumstances comes from epidemiologic studies showing that greater microbial exposure in infancy is associated with reduced risk of chronic inflammation in adulthood^{8,168}, as predicted by the hygiene, or ‘old friends’, hypothesis⁸². Additionally, there is evidence that exposure to psychological stress early in life—for example, in the form of abuse, neglect, maltreatment, bullying or living in a low socioeconomic environment—can heighten neural responses to threat that can upregulate inflammatory activity¹⁷⁰, alter immunocompetence and lead to SCI throughout the lifecycle^{27,169}.

Further back in the developmental trajectory are data showing that the immune system is programmed during the prenatal period¹⁷¹ and is affected by epigenetic changes induced by maternal environmental exposures (for example, infectious agents, diet, psychological stress and xenobiotics) during intrauterine life and even before conception, when paternal factors may also have an epigenetic effect^{26,128,171}. Together, these effects create the potential for the intergenerational transmission of risk for SCI. In this model (Fig. 2), SCI and disease risk are hypothesized to be perpetuated transgenerationally. In short, maternal inflammation during pregnancy^{172,173} is believed to pass an inflammatory ‘code’ through epigenetic modifications to the offspring, who will exhibit elevated risk for SCI in childhood and adulthood and therefore be more likely to suffer from a wide variety of inflammation-related health problems, including obesity⁷, CVD⁷, cancer¹⁷⁴ and neurological illness¹⁷⁵, among others, only to again pass this risk on to their own offspring.

Chronic inflammation and the immune response to acute challenges

Despite the observation that SCI generally increases with age, a majority of older adults experience a down-regulation of components of the immune response that leads to an increased susceptibility to viral infections and weakened responses to vaccines. This apparent paradox (Fig. 3) can be explained by several mechanisms.

Specifically, elevated SCI can lead to a basal low-grade constitutive activation of various signaling pathways, such as the Janus kinase/signal transducers and activators of transcription (JAK–STAT) system in leukocytes, which results in a weakened acute response to multiple stimuli in immune cells from older adults with chronic inflammation due to reduced fold-increase in the levels of phosphorylation of these proteins after cell stimulation²². Elevated SCI has also been shown to predict hypo-responsiveness to the hepatitis B vaccine in humans²⁴. Additionally, there is evidence that certain inflammatory biomarkers, such as CRP, are inversely correlated with older adults’ response to other vaccines, such as the herpes zoster vaccine²³. Interestingly, this also seems to be true for younger individuals. Among adolescents, for example, those who respond well to typhoid vaccination have been found to exhibit lower concentrations of CRP than non-responders in adulthood²⁵. In sum, this research helps to explain the pro-inflammatory/anti-viral skewing that occurs as individuals age. This work also suggests that exposure to an inflammatory environment early in life is an important determinant of multiple aspects of an individual’s immuno-phenotype in adulthood.

Future directions

Considered together, this body of research provides converging evidence that SCI is associated with increased risk for developing a variety of chronic diseases that dominate present-day morbidity and

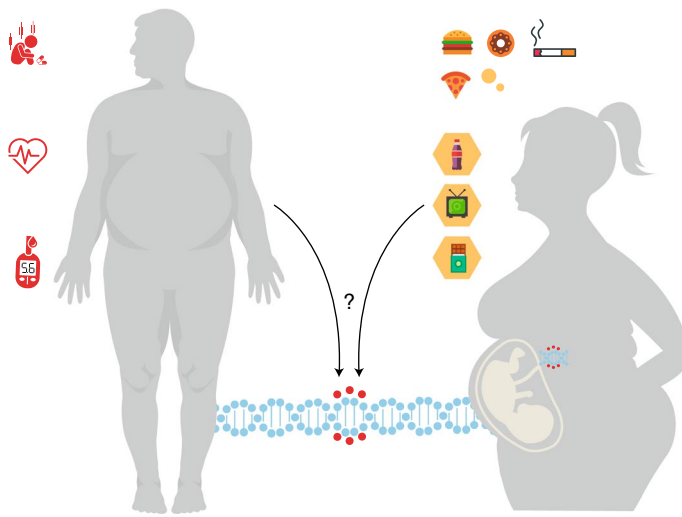


Fig. 2 | The maternal exposome and low-grade systemic chronic inflammation. Maternal lifestyle and environmental exposures—collectively referred to as the exposome—include diet, physical activity, psychological stress and exposure to various xenobiotics, such as pollutants and smoking during intrauterine life. These factors in turn can influence the programming of the immune system of the offspring, potentially leading to a more pro-inflammatory phenotype later in life. Relevant factors, including environmental factors such as poor access to healthy food, housing insecurity, psychological stress and polluted air, lead to a mother giving birth to a fetus with epigenetic marks that increase the child's risk for obesity, low-grade SCI and its associated consequences in adolescence and adulthood.

mortality worldwide and that cause enormous amounts of human suffering. At the same time, there are several key avenues that could be pursued to help strengthen this work and translate this research into effective strategies for improving human health.

First, there is a clear need for additional studies that collect data on multiple factors affecting SCI to form a more comprehensive picture of how exposures and experiences identified at different levels of analysis combine to affect SCI and inflammation-related disease risk. Second, the field sorely needs robust integrative biomarkers of SCI that go beyond combining a few canonical biomarkers of acute inflammation. Existing biomarkers, which have primarily included CRP, IL-1 β , IL-6 and TNF- α , have been useful for demonstrating that inflammatory activity is related to disease and mortality risk, but these markers provide only limited mechanistic information (given the enormous complexity of the inflammatory response) and they do not address anti-inflammatory regulatory pathways that may also be relevant for influencing inflammation-related disease risk. Future research should thus focus on additional biomarkers that have been found to have substantial variability across individuals, such as CD8⁺ T cell subsets, monocytes, NK cells, B cells and CD4⁺ T cell subsets¹⁷⁶. This work should also include molecular, transcriptional and proteomic markers of SCI, which have only been examined in limited ways to date¹⁷⁷. Constructing biomarkers that integrate information from a variety of different data sources and levels of analysis to represent inflammatory activity and immune regulation and dysregulation would be particularly useful, as would applying multi-omics approaches, computational modeling and artificial intelligence to study how SCI-related mechanisms both change and predict changes in clinical status within individuals over the life span¹⁷⁸.

Third, given the difficulty associated with experimentally manipulating factors such as diet, sleep and stress levels that affect inflammation, a majority of studies conducted thus far have

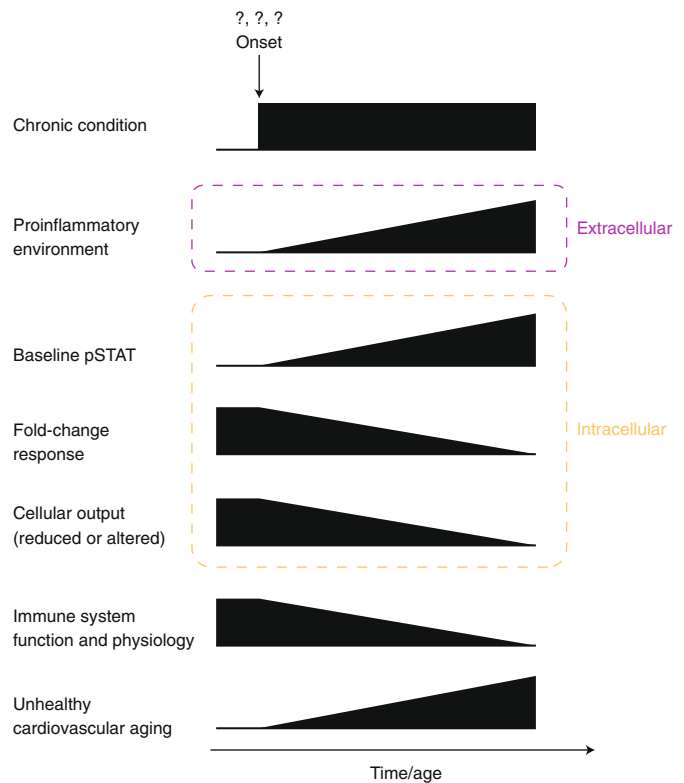


Fig. 3 | Inflammatory model of immunosenescence and chronic disease.

This proposed model associates elevated baseline phosphorylated signaling proteins (for example, phosphorylated STAT (pSTAT) levels) with cellular unresponsiveness and chronically elevated inflammatory activity. The model involves an elevation of baseline pSTAT levels and its association with hallmark phenomenon of immunosenescence, an increased pro-inflammatory environment, unresponsive cells and a clinical impact on immune response. (Adapted with permission from ref. ²², Elsevier.)

collected inflammatory biomarker data under basal conditions in which the immune system is not challenged. This is a sensible starting place, but such research does not provide any information regarding biological reactivity or recovery (for example, from infection or psychological or physiological stress), which may ultimately be most useful for understanding individual differences in inflammation-related disease risk^{3,179}. Finally, although many of the SCI-promoting factors that we have described herein are at least partly modifiable—including physical inactivity, poor diet, nighttime blue light exposure, tobacco smoking, environmental and industrial toxicants exposure and psychological stress—the number of studies that have successfully targeted these risk factors and shown corresponding reductions in SCI levels is limited. This has occurred despite the fact that the association between inflammation and chronic disease is now widely recognized and that healthcare systems are buckling due to the enormous cost of treating a worldwide population that is heavily burdened by SCI-related chronic health problems. Therefore, the time to start seriously studying how to prevent and treat SCI-related disease risk in both children and adults is now.

In conclusion, we have a long way to go before we fully understand the role that SCI plays in disease risk, biological aging and mortality. For example, no study to date has assessed the entire human exposome over the entire developmental trajectory, starting in utero (for example, by measuring maternal exposures, type of delivery and early-life nutrition) and continuing into adulthood

(for example, by assessing social and cultural processes, xenobiotic exposures, individual lifestyle habits, lifelong antibiotic use, vaccinations, infectious diseases and social-psychological stressors). Moreover, only a few studies have investigated how modifying SCI-related processes may benefit human health or longevity. As a result, although SCI is a highly modifiable process in principle, additional research, initiative and investment are needed before we fully realize the potential benefits associated with targeting inflammation to improve human health.

Received: 31 October 2018; Accepted: 31 October 2019;
Published online: 5 December 2019

References

- Furman, D. et al. Expression of specific inflammasome gene modules stratifies older individuals into two extreme clinical and immunological states. *Nat. Med.* **23**, 174–184 (2017).
- Netea, M. G. et al. A guiding map for inflammation. *Nat. Immunol.* **18**, 826–831 (2017).
- Slavich, G. M. Understanding inflammation, its regulation, and relevance for health: a top scientific and public priority. *Brain Behav. Immun.* **45**, 13–14 (2015).
- Bennett, J. M., Reeves, G., Billman, G. E. & Sturmborg, J. P. Inflammation—nature's way to efficiently respond to all types of challenges: implications for understanding and managing “the epidemic” of chronic diseases. *Front. Med.* **5**, 316 (2018).
- GBD 2017 Causes of Death Collaborators. Global, regional, and national age-sex-specific mortality for 282 causes of death in 195 countries and territories, 1980–2017: a systematic analysis for the Global Burden of Disease Study 2017. *Lancet* **392**, 1736–1788 (2018).
- Miller, G. E., Chen, E. & Parker, K. J. Psychological stress in childhood and susceptibility to the chronic diseases of aging: moving toward a model of behavioral and biological mechanisms. *Psychol. Bull.* **137**, 959–997 (2011).
- Fleming, T. P. et al. Origins of lifetime health around the time of conception: causes and consequences. *Lancet* **391**, 1842–1852 (2018).
- Renz, H. et al. An exposome perspective: early-life events and immune development in a changing world. *J. Allergy Clin. Immunol.* **140**, 24–40 (2017).
- Kotas, M. E. & Medzhitov, R. Homeostasis, inflammation, and disease susceptibility. *Cell* **160**, 816–827 (2015).
- Straub, R. H., Cutolo, M., Buttgerit, F. & Pongratz, G. Energy regulation and neuroendocrine-immune control in chronic inflammatory diseases. *J. Intern. Med.* **267**, 543–560 (2010).
- Straub, R. H., Cutolo, M. & Pacifici, R. Evolutionary medicine and bone loss in chronic inflammatory diseases—a theory of inflammation-related osteopenia. *Semin. Arthritis Rheum.* **45**, 220–228 (2015).
- Straub, R. H. & Schradin, C. Chronic inflammatory systemic diseases: an evolutionary trade-off between acutely beneficial but chronically harmful programs. *Evol. Med. Public Health* **2016**, 37–51 (2016).
- Straub, R. H. The brain and immune system prompt energy shortage in chronic inflammation and ageing. *Nat. Rev. Rheumatol.* **13**, 743–751 (2017).
- Slavich, G. M. Psychoneuroimmunology of stress and mental health. in *The Oxford Handbook of Stress and Mental Health* (eds K. Harkness & E. P. Hayden) (Oxford University Press, in the press).
- Fullerton, J. N. & Gilroy, D. W. Resolution of inflammation: a new therapeutic frontier. *Nat. Rev. Drug Discov.* **15**, 551–567 (2016).
- Calder, P. C. et al. A consideration of biomarkers to be used for evaluation of inflammation in human nutritional studies. *Br. J. Nutr.* **109**, S1–S34 (2013).
- Taniguchi, K. & Karin, M. NF- κ B, inflammation, immunity and cancer: coming of age. *Nat. Rev. Immunol.* **18**, 309–324 (2018).
- Gisterå, A. & Hansson, G. K. The immunology of atherosclerosis. *Nat. Rev. Nephrol.* **13**, 368–380 (2017).
- Ferrucci, L. & Fabbri, E. Inflammageing: chronic inflammation in ageing, cardiovascular disease, and frailty. *Nat. Rev. Cardiol.* **15**, 505–522 (2018).
- Heneka, M. T., Kummer, M. P. & Latz, E. Innate immune activation in neurodegenerative disease. *Nat. Rev. Immunol.* **14**, 463–477 (2014).
- Miller, A. H. & Raison, C. L. The role of inflammation in depression: from evolutionary imperative to modern treatment target. *Nat. Rev. Immunol.* **16**, 22–34 (2016).
- Shen-Orr, S. S. et al. Defective signaling in the JAK-STAT pathway tracks with chronic inflammation and cardiovascular risk in aging humans. *Cell Syst.* **3**, 374–384.e4 (2016).
- Verschoor, C. P. et al. Serum C-reactive protein and congestive heart failure as significant predictors of herpes zoster vaccine response in elderly nursing home residents. *J. Infect. Dis.* **216**, 191–197 (2017).
- Fourati, S. et al. Pre-vaccination inflammation and B-cell signalling predict age-related hyporesponse to hepatitis B vaccination. *Nat. Commun.* **7**, 10369 (2016).
- McDade, T. W., Adair, L., Feranil, A. B. & Kuzawa, C. Positive antibody response to vaccination in adolescence predicts lower C-reactive protein concentration in young adulthood in the Philippines. *Am. J. Hum. Biol.* **23**, 313–318 (2011).
- Singer, K. & Lumeng, C. N. The initiation of metabolic inflammation in childhood obesity. *J. Clin. Invest.* **127**, 65–73 (2017).
- Olvera Alvarez, H. A., Kubzansky, L. D., Campen, M. J. & Slavich, G. M. Early life stress, air pollution, inflammation, and disease: an integrative review and immunologic model of social-environmental adversity and lifespan health. *Neurosci. Biobehav. Rev.* **92**, 226–242 (2018).
- Serhan, C. N. Pro-resolving lipid mediators are leads for resolution physiology. *Nature* **510**, 92–101 (2014).
- Serhan, C. N. & Levy, B. D. Resolvins in inflammation: emergence of the pro-resolving superfamily of mediators. *J. Clin. Invest.* **128**, 2657–2669 (2018).
- Franceschi, C., Garagnani, P., Vitale, G., Capri, M. & Salvioli, S. Inflammaging and ‘garb-aging’. *Trends Endocrinol. Metab.* **28**, 199–212 (2017).
- Liston, A. & Masters, S. L. Homeostasis-altering molecular processes as mechanisms of inflammasome activation. *Nat. Rev. Immunol.* **17**, 208–214 (2017).
- Frank, D. & Vince, J. E. Pyroptosis versus necroptosis: similarities, differences, and crosstalk. *Cell Death Differ.* **26**, 99–114 (2019).
- Jin, C., Henao-Mejia, J. & Flavell, R. A. Innate immune receptors: key regulators of metabolic disease progression. *Cell Metab.* **17**, 873–882 (2013).
- Hotamisligil, G. S. Inflammation, metaflammation and immunometabolic disorders. *Nature* **542**, 177–185 (2017).
- Kazankov, K. et al. The role of macrophages in nonalcoholic fatty liver disease and nonalcoholic steatohepatitis. *Nat. Rev. Gastroenterol. Hepatol.* **16**, 145–159 (2019).
- Redlich, K. & Smolen, J. S. Inflammatory bone loss: pathogenesis and therapeutic intervention. *Nat. Rev. Drug Discov.* **11**, 234–250 (2012).
- Zhang, J. et al. The risk of metabolic syndrome in patients with rheumatoid arthritis: a meta-analysis of observational studies. *PLoS One* **8**, e78151 (2013).
- Armstrong, A. W., Harskamp, C. T. & Armstrong, E. J. Psoriasis and the risk of diabetes mellitus: a systematic review and meta-analysis. *JAMA Dermatol.* **149**, 84–91 (2013).
- Dregan, A., Charlton, J., Chowieniczky, P. & Gulliford, M. C. Chronic inflammatory disorders and risk of type 2 diabetes mellitus, coronary heart disease, and stroke: a population-based cohort study. *Circulation* **130**, 837–844 (2014).
- Ridker, P. M. A test in context: high-sensitivity C-reactive protein. *J. Am. Coll. Cardiol.* **67**, 712–723 (2016).
- Emerging Risk Factors Collaboration. et al. C-reactive protein concentration and risk of coronary heart disease, stroke, and mortality: an individual participant meta-analysis. *Lancet* **375**, 132–140 (2010).
- Burska, A. N., Sakthiswary, R. & Sattar, N. Effects of tumour necrosis factor antagonists on insulin sensitivity/resistance in rheumatoid arthritis: a systematic review and meta-analysis. *PLoS One* **10**, e0128889 (2015).
- Chou, R. et al. Treatment for rheumatoid arthritis and risk of Alzheimer's disease: a nested case-control analysis. *CNS Drugs* **30**, 1111–1120 (2016).
- Ridker, P. M. et al. Antiinflammatory therapy with canakinumab for atherosclerotic disease. *N. Engl. J. Med.* **377**, 1119–1131 (2017).
- Proctor, M. J. et al. Systemic inflammation predicts all-cause mortality: a Glasgow inflammation outcome study. *PLoS One* **10**, e0116206 (2015).
- Arai, Y. et al. Inflammation, but not telomere length, predicts successful ageing at extreme old age: a longitudinal study of semi-supercentenarians. *EBioMedicine* **2**, 1549–1558 (2015).
- Robenoff, R. et al. Monocyte cytokine production in an elderly population: effect of age and inflammation. *J. Gerontol. A Biol. Sci. Med. Sci.* **53**, M20–M26 (1998).
- Ahluwalia, N. et al. Cytokine production by stimulated mononuclear cells did not change with aging in apparently healthy, well-nourished women. *Mech. Ageing Dev.* **122**, 1269–1279 (2001).
- Beharka, A. A. et al. Interleukin-6 production does not increase with age. *J. Gerontol. A Biol. Sci. Med. Sci.* **56**, B81–B8 (2001).
- Elisia, I. et al. Effect of age on chronic inflammation and responsiveness to bacterial and viral challenges. *PLoS One* **12**, e0188881 (2017).
- Morrisette-Thomas, V. et al. Inflamm-aging does not simply reflect increases in pro-inflammatory markers. *Mech. Ageing Dev.* **139**, 49–57 (2014).
- Alpert, A. et al. A clinically meaningful metric of immune age derived from high-dimensional longitudinal monitoring. *Nat. Med.* **25**, 487–495 (2019).

53. Coppé, J.-P., Desprez, P.-Y., Krtolica, A. & Campisi, J. The senescence-associated secretory phenotype: the dark side of tumor suppression. *Annu. Rev. Pathol.* **5**, 99–118 (2010).
54. Zhu, Y., Armstrong, J. L., Tchkonja, T. & Kirkland, J. L. Cellular senescence and the senescent secretory phenotype in age-related chronic diseases. *Curr. Opin. Clin. Nutr. Metab. Care* **17**, 324–328 (2014).
55. Kennedy, B. K. et al. Geroscience: linking aging to chronic disease. *Cell* **159**, 709–713 (2014).
56. Campisi, J. Aging, cellular senescence, and cancer. *Annu. Rev. Physiol.* **75**, 685–705 (2013).
57. Effros, R. B. The silent war of CMV in aging and HIV infection. *Mech. Ageing Dev.* **158**, 46–52 (2016).
58. Stout, M. B., Justice, J. N., Nicklas, B. J. & Kirkland, J. L. Physiological aging: links among adipose tissue dysfunction, diabetes, and frailty. *Physiology (Bethesda)* **32**, 9–19 (2017).
59. Franceschi, C., Garagnani, P., Parini, P., Giuliani, C. & Santoro, A. Inflammaging: a new immune-metabolic viewpoint for age-related diseases. *Nat. Rev. Endocrinol.* **159**, 1–15 (2018).
60. Zitvogel, L., Pietrocola, F. & Kroemer, G. Nutrition, inflammation and cancer. *Nat. Immunol.* **18**, 843–850 (2017).
61. Razzoli, M. et al. Social stress shortens lifespan in mice. *Aging Cell* **17**, e12778 (2018).
62. Carroll, J. E. et al. Partial sleep deprivation activates the DNA damage response (DDR) and the senescence-associated secretory phenotype (SASP) in aged adult humans. *Brain Behav. Immun.* **51**, 223–229 (2016).
63. Yuan, J. et al. Long-term persistent organic pollutants exposure induced telomere dysfunction and senescence-associated secretory phenotype. *J. Gerontol. A Biol. Sci. Med. Sci.* **73**, 1027–1035 (2018).
64. Shen-Orr, S. S. & Furman, D. Variability in the immune system: of vaccine responses and immune states. *Curr. Opin. Immunol.* **25**, 542–547 (2013).
65. McDade, T. W. Early environments and the ecology of inflammation. *Proc. Natl Acad. Sci. USA* **109**, 17281–17288 (2012).
66. Carrera-Bastos, P., Fontes-Villalba, M., O’Keefe, J. H., Lindeberg, S. & Cordain, L. The western diet and lifestyle and diseases of civilization. *Res. Rep. Clin. Cardiol.* **2**, 15–35 (2011).
67. Raichlen, D. A. et al. Physical activity patterns and biomarkers of cardiovascular disease risk in hunter-gatherers. *Am. J. Hum. Biol.* **29**, e22919 (2017).
68. Kaplan, H. et al. Coronary atherosclerosis in indigenous South American Tsimane: a cross-sectional cohort study. *Lancet* **389**, 1730–1739 (2017).
69. Lindeberg, S. & Lundh, B. Apparent absence of stroke and ischaemic heart disease in a traditional Melanesian island: a clinical study in Kitava. *J. Intern. Med.* **233**, 269–275 (1993).
70. Lindeberg, S., Berntorp, E., Nilsson-Ehle, P., Terént, A. & Vessby, B. Age relations of cardiovascular risk factors in a traditional Melanesian society: the Kitava Study. *Am. J. Clin. Nutr.* **66**, 845–852 (1997).
71. Lindeberg, S., Eliasson, M., Lindahl, B. & Ahrén, B. Low serum insulin in traditional Pacific Islanders—the Kitava Study. *Metabolism* **48**, 1216–1219 (1999).
72. Brodin, P. et al. Variation in the human immune system is largely driven by non-heritable influences. *Cell* **160**, 37–47 (2015).
73. Niedzwiecki, M. M. et al. The exposome: molecules to populations. *Annu. Rev. Pharmacol. Toxicol.* **59**, 107–127 (2019).
74. Virgin, H. W., Wherry, E. J. & Ahmed, R. Redefining chronic viral infection. *Cell* **138**, 30–50 (2009).
75. Wang, C. et al. Effects of aging, cytomegalovirus infection, and EBV infection on human B cell repertoires. *J. Immunol.* **192**, 603–611 (2014).
76. Petta, S. et al. Hepatitis C virus infection is associated with increased cardiovascular mortality: a meta-analysis of observational studies. *Gastroenterology* **150**, 145–155.e4 (2016).
77. Root-Bernstein, R. & Fairweather, D. Complexities in the relationship between infection and autoimmunity. *Curr. Allergy Asthma Rep.* **14**, 407 (2014).
78. Furman, D. et al. Cytomegalovirus infection enhances the immune response to influenza. *Sci. Transl. Med.* **7**, 281ra43 (2015).
79. Pawelec, G. et al. Human immunosenescence: is it infectious? *Immunol. Rev.* **205**, 257–268 (2005).
80. Chou, J. P., Ramirez, C. M., Wu, J. E. & Effros, R. B. Accelerated aging in HIV/AIDS: novel biomarkers of senescent human CD8+ T cells. *PLoS One* **8**, e64702 (2013).
81. Sochocka, M., Zwolińska, K. & Leszek, J. The infectious etiology of Alzheimer’s disease. *Curr. Neuropharmacol.* **15**, 996–1009 (2017).
82. Rook, G., Bäckhed, F., Levin, B. R., McFall-Ngai, M. J. & McLean, A. R. Evolution, human-microbe interactions, and life history plasticity. *Lancet* **390**, 521–530 (2017).
83. McDade, T. W. et al. Analysis of variability of high sensitivity C-reactive protein in lowland Ecuador reveals no evidence of chronic low-grade inflammation. *Am. J. Hum. Biol.* **24**, 675–681 (2012).
84. Liebert, M. A. et al. Implications of market integration for cardiovascular and metabolic health among an indigenous Amazonian Ecuadorian population. *Ann. Hum. Biol.* **40**, 228–242 (2013).
85. Eriksson, U. K., van Bodegom, D., May, L., Boef, A. G. C. & Westendorp, R. G. J. Low C-reactive protein levels in a traditional West-African population living in a malaria endemic area. *PLoS One* **8**, e70076 (2013).
86. Agmon-Levin, N. et al. Antitreponemal antibodies leading to autoantibody production and protection from atherosclerosis in Kitavans from Papua New Guinea. *Ann. N. Y. Acad. Sci.* **1173**, 675–682 (2009).
87. Gurven, M., Jaeggi, A. V., Kaplan, H. & Cummings, D. Physical activity and modernization among Bolivian Amerindians. *PLoS One* **8**, e55679 (2013).
88. Cordain, L. et al. Plant-animal subsistence ratios and macronutrient energy estimations in worldwide hunter-gatherer diets. *Am. J. Clin. Nutr.* **71**, 682–692 (2000).
89. Kuipers, R. S., Jordeans, J. C. A. & Muskiet, F. A. J. A multidisciplinary reconstruction of Palaeolithic nutrition that holds promise for the prevention and treatment of diseases of civilisation. *Nutr. Res. Rev.* **25**, 96–129 (2012).
90. De la Iglesia, H. O. et al. Ancestral sleep. *Curr. Biol.* **26**, R271–R272 (2016).
91. Slavich, G. M. & Cole, S. W. The emerging field of human social genomics. *Clin. Psychol. Sci.* **1**, 331–348 (2013).
92. Chakravarthy, M. V. & Booth, F. W. Eating, exercise, and ‘thrifty’ genotypes: connecting the dots toward an evolutionary understanding of modern chronic diseases. *J. Appl. Physiol.* **96**, 3–10 (2004).
93. Hallal, P. C. et al. Global physical activity levels: surveillance progress, pitfalls, and prospects. *Lancet* **380**, 247–257 (2012).
94. Katzmarzyk, P. T., Lee, I.-M., Martin, C. K. & Blair, S. N. Epidemiology of physical activity and exercise training in the United States. *Prog. Cardiovasc. Dis.* **60**, 3–10 (2017).
95. Fiuzza-Luces, C. et al. Exercise benefits in cardiovascular disease: beyond attenuation of traditional risk factors. *Nat. Rev. Cardiol.* **15**, 731–743 (2018).
96. Breen, L. et al. Two weeks of reduced activity decreases leg lean mass and induces ‘anabolic resistance’ of myofibrillar protein synthesis in healthy elderly. *J. Clin. Endocrinol. Metab.* **98**, 2604–2612 (2013).
97. Fedewa, M. V., Hathaway, E. D. & Ward-Ritacco, C. L. Effect of exercise training on C reactive protein: a systematic review and meta-analysis of randomised and non-randomised controlled trials. *Br. J. Sports Med.* **51**, 670–676 (2017).
98. Meneses-Echávez, J. F. et al. The effect of exercise training on mediators of inflammation in breast cancer survivors: a systematic review with meta-analysis. *Cancer Epidemiol. Biomarkers Prev.* **25**, 1009–1017 (2016).
99. Hayashino, Y. et al. Effects of exercise on C-reactive protein, inflammatory cytokine and adipokine in patients with type 2 diabetes: a meta-analysis of randomized controlled trials. *Metab. Clin. Exp.* **63**, 431–440 (2014).
100. Booth, F. W., Roberts, C. K. & Laye, M. J. Lack of exercise is a major cause of chronic diseases. *Compr. Physiol.* **2**, 1143–1211 (2012).
101. Wahid, A. et al. Quantifying the association between physical activity and cardiovascular disease and diabetes: a systematic review and meta-analysis. *J. Am. Heart Assoc.* **5**, e002495 (2016).
102. Moore, S. C. et al. Association of leisure-time physical activity with risk of 26 types of cancer in 1.44 million adults. *JAMA Intern. Med.* **176**, 816–825 (2016).
103. Santos-Lozano, A. et al. Physical activity and Alzheimer disease: a protective association. *Mayo. Clin. Proc.* **91**, 999–1020 (2016).
104. Pérez, L. M. et al. ‘Adipaging’: ageing and obesity share biological hallmarks related to a dysfunctional adipose tissue. *J. Physiol.* **594**, 3187–3207 (2016).
105. Schipper, H. S., Prakken, B., Kalkhoven, E. & Boes, M. Adipose tissue-resident immune cells: key players in immunometabolism. *Trends Endocrinol. Metabol.* **23**, 407–415 (2012).
106. Tchernof, A. & Després, J.-P. Pathophysiology of human visceral obesity: an update. *Physiol. Rev.* **93**, 359–404 (2013).
107. Pellegrinelli, V., Carobbio, S. & Vidal-Puig, A. Adipose tissue plasticity: how fat depots respond differently to pathophysiological cues. *Diabetologia* **59**, 1075–1088 (2016).
108. Frasca, D., Blomberg, B. B. & Paganelli, R. Aging, obesity, and inflammatory age-related diseases. *Front. Immunol.* **8**, 1745 (2017).
109. Grant, R. W. & Dixit, V. D. Adipose tissue as an immunological organ. *Obesity (Silver Spring)* **23**, 512–518 (2015).
110. Versini, M., Jeandel, P.-Y., Rosenthal, E. & Shoenfeld, Y. Obesity in autoimmune diseases: not a passive bystander. *Autoimm. Rev.* **13**, 981–1000 (2014).
111. Himbert, C. et al. Signals from the adipose microenvironment and the obesity-cancer link—a systematic review. *Cancer Prev. Res. (Phila.)* **10**, 494–506 (2017).
112. van Dijk, G. et al. Integrative neurobiology of metabolic diseases, neuroinflammation, and neurodegeneration. *Front. Neurosci.* **9**, 173 (2015).

113. NCD Risk Factor Collaboration (NCD-RisC). et al. Worldwide trends in body-mass index, underweight, overweight, and obesity from 1975 to 2016: a pooled analysis of 2416 population-based measurement studies in 128.9 million children, adolescents, and adults. *Lancet* **390**, 2627–2642 (2017).
114. Cani, P. D. & Jordan, B. F. Gut microbiota-mediated inflammation in obesity: a link with gastrointestinal cancer. *Nat. Rev. Gastroenterol. Hepatol.* **15**, 671–682 (2018).
115. Le Chatelier, E. et al. Richness of human gut microbiome correlates with metabolic markers. *Nature* **500**, 541–546 (2013).
116. Aron-Wisnewsky, J. et al. Major microbiota dysbiosis in severe obesity: fate after bariatric surgery. *Gut* **68**, 70–82 (2019).
117. Sturgeon, C. & Fasano, A. Zonulin, a regulator of epithelial and endothelial barrier functions, and its involvement in chronic inflammatory diseases. *Tissue Barriers* **4**, e1251384 (2016).
118. Jayashree, B. et al. Increased circulatory levels of lipopolysaccharide (LPS) and zonulin signify novel biomarkers of proinflammation in patients with type 2 diabetes. *Mol. Cell. Biochem.* **388**, 203–210 (2014).
119. Kùme, T. et al. The relationship between serum zonulin level and clinical and laboratory parameters of childhood obesity. *J. Clin. Res. Pediatr. Endocrinol.* **9**, 31–38 (2017).
120. Qi, Y. et al. Intestinal permeability biomarker zonulin is elevated in healthy aging. *J. Am. Med. Assoc.* **18**, 810.e1–810.e4 (2017).
121. Le Bastard, Q. et al. Systematic review: human gut dysbiosis induced by non-antibiotic prescription medications. *Aliment. Pharmacol. Ther.* **47**, 332–345 (2018).
122. Bjarnason, I. et al. Mechanisms of damage to the gastrointestinal tract from nonsteroidal anti-inflammatory drugs. *Gastroenterology* **154**, 500–514 (2018).
123. Sonnenburg, E. D. & Sonnenburg, J. L. The ancestral and industrialized gut microbiota and implications for human health. *Nat. Rev. Microbiol.* **17**, 383–390 (2019).
124. Bentley, J. U.S. trends in food availability and a dietary assessment of loss-adjusted food availability, 1970–2014. *EIB-166, U.S. Department of Agriculture, Economic Research Service* (2017).
125. Martinez Steele, E. et al. Ultra-processed foods and added sugars in the US diet: evidence from a nationally representative cross-sectional study. *BMJ Open* **6**, e009892 (2016).
126. Grant, B. F. et al. Prevalence of 12-month alcohol use, high-risk drinking, and DSM-IV alcohol use disorder in the United States, 2001–2002 to 2012–2013: results from the national epidemiologic survey on alcohol and related conditions. *JAMA. Psychiatry* **74**, 911–923 (2017).
127. Chassaing, B., Van de Wiele, T., De Bodt, J., Marzorati, M. & Gewirtz, A. T. Dietary emulsifiers directly alter human microbiota composition and gene expression ex vivo potentiating intestinal inflammation. *Gut* **66**, 1414–1427 (2017).
128. Zmora, N., Bashardes, S., Levy, M. & Elinav, E. The role of the immune system in metabolic health and disease. *Cell Metab.* **25**, 506–521 (2017).
129. Richards, J. L., Yap, Y. A., McLeod, K. H., Mackay, C. R. & Mariño, E. Dietary metabolites and the gut microbiota: an alternative approach to control inflammatory and autoimmune diseases. *Clin. Trans. Immunol.* **5**, e82 (2016).
130. Bishehsari, F. et al. Alcohol and gut-derived inflammation. *Alcohol Res.* **38**, 163–171 (2017).
131. Lerner, A. & Matthias, T. Changes in intestinal tight junction permeability associated with industrial food additives explain the rising incidence of autoimmune disease. *Autoimm. Rev.* **14**, 479–489 (2015).
132. Vlassara, H. & Striker, G. E. AGE restriction in diabetes mellitus: a paradigm shift. *Nat. Rev. Endocrinol.* **7**, 526–539 (2011).
133. Dickinson, S., Hancock, D. P., Petocz, P., Ceriello, A. & Brand-Miller, J. High-glycemic index carbohydrate increases nuclear factor-kappaB activation in mononuclear cells of young, lean healthy subjects. *Am. J. Clin. Nutr.* **87**, 1188–1193 (2008).
134. Mozaffarian, D., Aro, A. & Willett, W. C. Health effects of trans-fatty acids: experimental and observational evidence. *Eur. J. Clin. Nutr.* **63**, S5–S21 (2009).
135. Muller, D. N., Wilck, N., Haase, S., Kleinewietfeld, M. & Linker, R. A. Sodium in the microenvironment regulates immune responses and tissue homeostasis. *Nat. Rev. Immunol.* **19**, 243–254 (2019).
136. Schnabel, L. et al. Association between ultraprocessed food consumption and risk of mortality among middle-aged adults in France. *JAMA Intern. Med.* **179**, 490–498 (2019).
137. Bonaventura, P., Benedetti, G., Albarède, F. & Miossec, P. Zinc and its role in immunity and inflammation. *Autoimm. Rev.* **14**, 277–285 (2015).
138. Nielsen, F. H. Effects of magnesium depletion on inflammation in chronic disease. *Curr. Opin. Clin. Nutr. Metab. Care* **17**, 525–530 (2014).
139. Calder, P. C. Omega-3 fatty acids and inflammatory processes: from molecules to man. *Biochem. Soc. Trans.* **45**, 1105–1115 (2017).
140. Blasbalg, T. L., Hibbeln, J. R., Ramsden, C. E., Majchrzak, S. F. & Rawlings, R. R. Changes in consumption of omega-3 and omega-6 fatty acids in the United States during the 20th century. *Am. J. Clin. Nutr.* **93**, 950–962 (2011).
141. Calder, P. C. Very long-chain n-3 fatty acids and human health: fact, fiction and the future. *Proc. Nutr. Soc.* **77**, 52–72 (2018).
142. Kiecolt-Glaser, J. K. et al. Omega-3 supplementation lowers inflammation and anxiety in medical students: a randomized controlled trial. *Brain Behav. Immun.* **25**, 1725–1734 (2011).
143. Kiecolt-Glaser, J. K. et al. Omega-3 supplementation lowers inflammation in healthy middle-aged and older adults: a randomized controlled trial. *Brain Behav. Immun.* **26**, 988–995 (2012).
144. AbuMweis, S., Jew, S., Tayyem, R. & Agraib, L. Eicosapentaenoic acid and docosahexaenoic acid containing supplements modulate risk factors for cardiovascular disease: a meta-analysis of randomised placebo-control human clinical trials. *J. Hum. Nutr. Diet.* **31**, 67–84 (2017).
145. Danaei, G. et al. The preventable causes of death in the United States: comparative risk assessment of dietary, lifestyle, and metabolic risk factors. *PLoS Med.* **6**, e1000058 (2009).
146. GBD 2017 Diet Collaborators. Health effects of dietary risks in 195 countries, 1990–2017: a systematic analysis for the Global Burden of Disease Study 2017. *Lancet* **393**, 1958–1972 (2019).
147. Hall, K. D. Did the food environment cause the obesity epidemic? *Obesity (Silver Spring)* **26**, 11–13 (2018).
148. van Niekerk, G., Toit, du, A., Loos, B. & Engelbrecht, A.-M. Nutrient excess and autophagic deficiency: explaining metabolic diseases in obesity. *Metab. Clin. Exp.* **82**, 14–21 (2018).
149. Slavich, G. M. & Irwin, M. R. From stress to inflammation and major depressive disorder: a social signal transduction theory of depression. *Psychol. Bull.* **140**, 774–815 (2014).
150. Tobaldini, E. et al. Short sleep duration and cardiometabolic risk: from pathophysiology to clinical evidence. *Nat. Rev. Cardiol.* **16**, 213–224 (2019).
151. Reutrakul, S. & Van Cauter, E. Sleep influences on obesity, insulin resistance, and risk of type 2 diabetes. *Metab. Clin. Exp.* **84**, 56–66 (2018).
152. Valtorta, N. K., Kanaan, M., Gilbody, S., Ronzi, S. & Hanratty, B. Loneliness and social isolation as risk factors for coronary heart disease and stroke: systematic review and meta-analysis of longitudinal observational studies. *Heart* **102**, 1009–1016 (2016).
153. Steptoe, A., Shankar, A., Demakakos, P. & Wardle, J. Social isolation, loneliness, and all-cause mortality in older men and women. *Proc. Natl Acad. Sci. USA* **110**, 5797–5801 (2013).
154. Kivimaki, M. & Steptoe, A. Effects of stress on the development and progression of cardiovascular disease. *Nat. Rev. Cardiol.* **15**, 215–229 (2018).
155. Chandola, T., Brunner, E. & Marmot, M. Chronic stress at work and the metabolic syndrome: prospective study. *BMJ* **332**, 521–525 (2006).
156. Cohen, S. et al. Chronic stress, glucocorticoid receptor resistance, inflammation, and disease risk. *Proc. Natl Acad. Sci. USA* **109**, 5995–5999 (2012).
157. Lunn, R. M. et al. Health consequences of electric lighting practices in the modern world: a report on the National Toxicology Program's workshop on shift work at night, artificial light at night, and circadian disruption. *Sci. Total Environ.* **607–608**, 1073–1084 (2017).
158. Hatori, M. et al. Global rise of potential health hazards caused by blue light-induced circadian disruption in modern aging societies. *NPJ Aging Mech. Dis.* **3**, 9 (2017).
159. Touitou, Y., Reinberg, A. & Touitou, D. Association between light at night, melatonin secretion, sleep deprivation, and the internal clock: health impacts and mechanisms of circadian disruption. *Life Sci.* **173**, 94–106 (2017).
160. Leproult, R., Holmbäck, U. & Van Cauter, E. Circadian misalignment augments markers of insulin resistance and inflammation, independently of sleep loss. *Diabetes* **63**, 1860–1869 (2014).
161. Jiang, C. et al. Dynamic human environmental exposome revealed by longitudinal personal monitoring. *Cell* **175**, 277–291.e31 (2018).
162. Sly, P. D. et al. Health consequences of environmental exposures: causal thinking in global environmental epidemiology. *Ann. Glob. Health* **82**, 3–9 (2016).
163. Collins, F. S., Gray, G. M. & Bucher, J. R. Toxicology. Transforming environmental health protection. *Science* **319**, 906–907 (2008).
164. Kleinstreuer, N. C. et al. Phenotypic screening of the ToxCast chemical library to classify toxic and therapeutic mechanisms. *Nat. Biotechnol.* **32**, 583–591 (2014).
165. Thompson, P. A. et al. Environmental immune disruptors, inflammation and cancer risk. *Carcinogenesis* **36**, S232–S253 (2015).
166. Floreani, A., Leung, P. S. C. & Gershwin, M. E. Environmental basis of autoimmunity. *Clin. Rev. Allergy Immunol.* **50**, 287–300 (2016).
167. GBD 2015 Tobacco Collaborators. Smoking prevalence and attributable disease burden in 195 countries and territories, 1990–2015: a systematic analysis from the Global Burden of Disease Study 2015. *Lancet* **389**, 1885–1906 (2017).
168. McDade, T. W., Rutherford, J., Adair, L. & Kuzawa, C. W. Early origins of inflammation: microbial exposures in infancy predict lower levels of C-reactive protein in adulthood. *Proc. Biol. Sci.* **277**, 1129–1137 (2010).

169. Fagundes, C. P., Glaser, R. & Kiecolt-Glaser, J. K. Stressful early life experiences and immune dysregulation across the lifespan. *Brain Behav. Immun.* **27**, 8–12 (2013).
170. Slavich, G. M., Way, B. M., Eisenberger, N. I. & Taylor, S. E. Neural sensitivity to social rejection is associated with inflammatory responses to social stress. *Proc. Natl Acad. Sci. USA* **107**, 14817–14822 (2010).
171. Macpherson, A. J., de Agüero, M. G. & Ganai-Vonarburg, S. C. How nutrition and the maternal microbiota shape the neonatal immune system. *Nat. Rev. Immunol.* **17**, 508–517 (2017).
172. Blazkova, J. et al. Multicenter systems analysis of human blood reveals immature neutrophils in males and during pregnancy. *J. Immunol.* **198**, 2479–2488 (2017).
173. Aghaeepour, N. et al. An immune clock of human pregnancy. *Sci. Immunol.* **2**, eaan2946 (2017).
174. Simmen, F. A. & Simmen, R. C. M. The maternal womb: a novel target for cancer prevention in the era of the obesity pandemic? *Eur. J. Cancer Prev.* **20**, 539–548 (2011).
175. Le Belle, J. E. et al. Maternal inflammation contributes to brain overgrowth and autism-associated behaviors through altered redox signaling in stem and progenitor cells. *Stem Cell Reports* **3**, 725–734 (2014).
176. Su, L. F. et al. The promised land of human immunology. *Cold Spring Harb. Symp. Quant. Biol.* **78**, 203–213 (2013).
177. Davis, M. M., Tato, C. M. & Furman, D. Systems immunology: just getting started. *Nat. Immunol.* **18**, 725–732 (2017).
178. Schüssler-Fiorenza Rose, S. M. et al. A longitudinal big data approach for precision health. *Nat. Med.* **25**, 792–804 (2019).
179. Slavich, G. M. & Sacher, J. Stress, sex hormones, inflammation, and major depressive disorder: extending social signal transduction theory of depression to account for sex differences in mood disorders. *Psychopharmacology (Berl.)* **236**, 3063–3079 (2019).

Acknowledgements

This work was made possible by support from the National Institutes of Health (NIH) and the Buck Institute for Research on Aging to D.F., the National Institute on Aging, Glenn and SENS Foundations, and the Buck Institute for Research on Aging to J.C.; the Ministry of Education and Science of the Russian Federation Agreement (074-02-2018-330) and Horizon 2020 Framework Programme (634821, PROPAG-AGING) and JPCo-fuND (ADAGE) to C.F.; the Intramural Research Program of the National Institute of Aging, NIH to L.F.; the MRC (UK) and Wellcome Trust to D.W.G.; NIH grant (R01 DK104344) to A.F.; the European Research Commission (PHIL-669415), Associazione Italiana Ricerca sul Cancro (Projects IG 19014, 5x1000 9962 and 21147), Fondazione Cariplo, and Italian Ministry of Health to A.M.; NIH grant (P01 AG036695) to T.A.R.; the National Institute on Aging and UCLA AIDS Institute to R.B.E.; the Spanish Ministry of Economy and Competitiveness and Fondos FEDER (PI15/00558 and PI18/00139) to A.L.; and a Society in Science–Branco Weiss Fellowship, NARSAD Young Investigator Grant 23958 from the Brain & Behavior Research Foundation and NIH grant (K08 MH103443) to G.M.S. This work represents the opinion of the authors and does not reflect official NIH policy.

Additional information

Correspondence should be addressed to D.F.

Peer review information Hannah Stower was the primary editor on this article and managed its editorial process and peer review in collaboration with the rest of the editorial team.

Reprints and permissions information is available at www.nature.com/reprints.

Publisher's note Springer Nature remains neutral with regard to jurisdictional claims in published maps and institutional affiliations.

© Springer Nature America, Inc. 2019